



## MICROMEX®

Bioaugmentation products for  
Bio-Wastewater Treatment

In biological wastewater systems, micro-organisms metabolise the soluble pollution, producing carbon dioxide, water and more micro-organisms (sludge).

Performance of a biological system is highly dependant on the microbial strains present. In many cases the biological population in an effluent plant is not ideally adapted to cope with variations in loading and composition and provide optimum performance.

Omex Environmental has developed the **MICROMEX®** range of solutions designed to optimise biological activity in aerobic wastewater treatment plants. These formulations are Group 1 naturally occurring and appropriate non pathogenic bacteria in high populations designed to help and reinforce the existing biomass thus improving treatment without incurring capital costs.

The **MICROMEX®** range contains the following series

### **MICROMEX 100 Series**

Broad spectrum bacteriological product designed to give consistent reduction of chemical oxygen demand (COD) and improved floc settlement. Enhanced performance of the plant with regard to COD and suspended solids levels will give quantifiable financial savings.

### **MICROMEX FOG 200 Series**

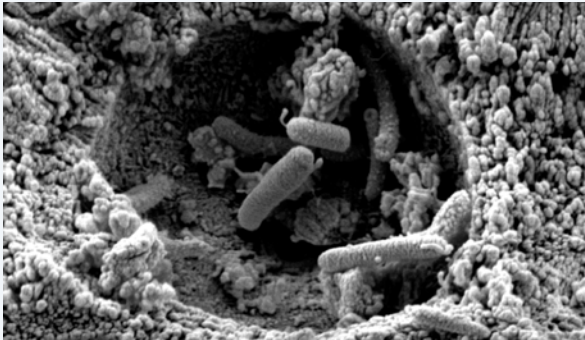
A range of products specially selected to enhance floc formation characteristics and out compete undesirable organisms such as Nocardia for their preferred fat, oil and grease substrate.

### **MICROMEX PP 300 Series**

Products designed for industries that produce large volumes of wastewater with hugely varying strengths. PP 300 products establish and maintain a resistant biomass able to degrade the pollutants contained in these difficult and varying wastes. These products can target specific goals such as degrading specific pollutants and/or improving environmental tolerance.

### **MICROMEX BIOSPIKE**

This product is a new microbiological solution to minimise settled sludge volume and remove solids handling costs in wastewater lagoons. By reducing sludge volume, lagoon operating volume is increased and dredging frequency reduced.



**KEY BENEFITS OF MICROMEX®**

| FOR THE USER         |   |
|----------------------|---|
| <b>EASE OF USE</b>   | Solid products easily added to a biological system. Available as powders or ready packaged sachets. |
| <b>NON HAZARDOUS</b> | Group 1 non pathogenic species.   |
| <b>CONTROLLABLE</b>  | Precise Dosing. Can target specific performance parameters.   |
| <b>ECONOMIC</b>      | Optimum plant performance with no capital outlay.   |

**FOR THE PROCESS**

- Optimal COD and BOD removal
- Sludge flocs with superior settling characteristics assist hydraulically stressed systems. Minimised solids loss.
- Ability to optimise specific performance goals.
- Ability to target specific pollutants.

**BACK UP SERVICE**

- Microbiological investigation to establish the optimum **MICROMEX®** formulation for your individual needs.
- Microbiological analysis and reporting.
- Advice on process optimisation.

**MICROMEX®**

Bioaugmentation products for Bio-Wastewater Treatment

**Omex Environmental**

Website: [www.omex.co.uk](http://www.omex.co.uk)

Email: [environmental@omex.com](mailto:environmental@omex.com)

**King's Lynn**

Riverside Industrial Estate, Estuary Road  
King's Lynn, Norfolk PE30 2HH

Tel: **01553 770092** Fax: **01553 776547**

**Lincoln**

Bardney Airfield, Topholme  
Lincoln, Lincolnshire LN3 5TP

Tel: **01526 396000** Fax: **01526 396001**